

KESLA
DEFENCE



KESLA KERBEROS

countermobility | mobility | logistics

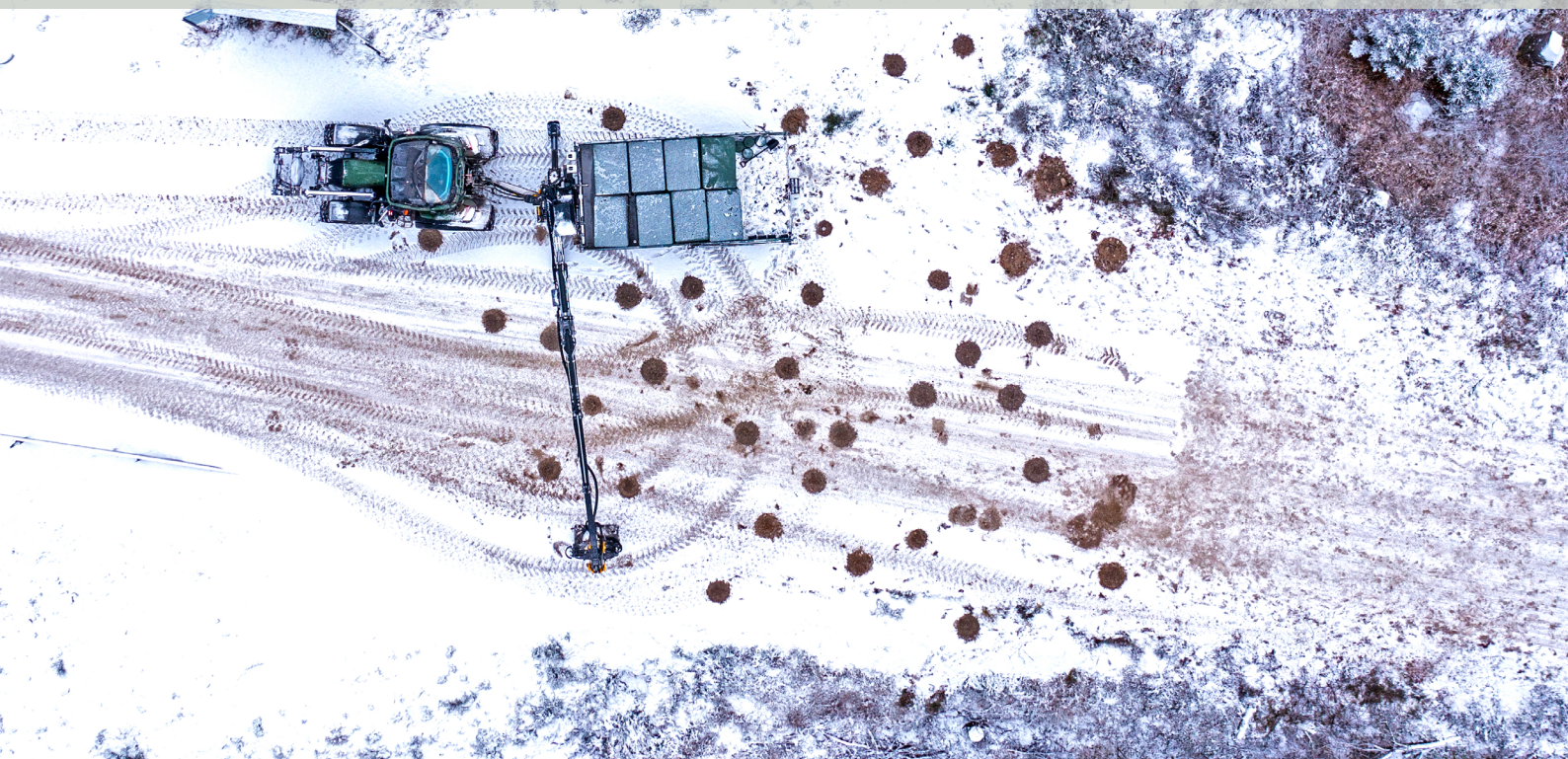
KESLA KERBEROS

KESLA Kerberos, developed by KESLA Defence in cooperation with the Finnish Defence Forces, is designed to meet the needs of military engineers in both rural and urban areas. The concept transforms ordinary tractors into countermobility capabilities by combining logistics, mobility and ground drilling capabilities. The Anti-Tank Mine-Laying System offers high-speed deployment of Anti-Tank Mines in various terrains with minimal manpower.

Furthermore, KESLA Kerberos enhances mobility for friendly forces and provides universal logistics solution – both in peace and war, on the road and deep in the forests.

countermobility

**Machined Anti-Tank Mine-Laying System | 8,8 m outreach | Carries 8 mine pallets
Max. 47 cm deep ø45cm holes drilled within 10-15 s**



mobility

Enabling minor mobility tasks on any terrain | 10 m turning radius

Travel speed up to 57 km/h on-road | Hydraulic nave-drive for off-road travel assistance



logistics

12,5 m² platform area | 7,5 m³ platform volume | Dividable platform | Tipping trailer

Universal cargo logistics | Pallets | Timber | Sand | Gravel



KESLA Defence

Born to defend and protect

KESLA Defence was established to meet a critical need for defence and protection. Collaboration between Kesla and the Finnish Defence Forces led to the development of the first KESLA Kerberos multipurpose trailer, featuring an innovative Anti-Tank Mine-Laying System. Building on six decades of expertise in operating in challenging forest environments, KESLA Defence specializes in developing and manufacturing Military Engineering solutions designed to contribute to a safer world.

Trailer	
Total width	2 598 mm
Total length	7 570 mm
Platform length	5 000 mm
Platform width	2 500 mm
Platform height	600 mm
Load space area	12,5 m ² / 8 x euro pallets
Platform internal volume	7,5 m ³
Ground clearance	630 mm
Own weight with loader and Anti-Tank Mine Drill	9 300 kg
Payload with loader and Anti-Tank Mine Drill	7 100 kg
Maximum total weight	16 400 kg
Tipping angle	40°

Loader		325T
Maximum reach		8,8 m
Lifting torque, gross		71 kNm
Lifting capacity at 4.0 m		1 335 kg
Slewing angle		380°
Operating pressure		190 bar
Anti-Tank Mine Drill		
Max. hole depth		47 cm
Max. hole diameter		45 cm

The pictured products may include optional accessories. Kesla Defence reserves right to make technical changes.